

Semi-Annual Social Safeguard and Resettlement Monitoring Report

January – June 2021

ADB LOAN No. 3928 INO

INO: Geothermal Power Generation Project



PT Geo Dipa Energi (Persero)

Project Management Unit

VALIDITY SHEET

	Position	Signature
Prepared by	Government Relation & Social Safeguard Staff	
		Date:
	Government Relation & Social Safeguard Assistant Manager	
		Date:
Approved by	HSE & Safeguard Manager	
		Date:
	Project General Manager	
		Date:

TABLE OF CONTENTS

VALIDITY SHEET	i
TABLE OF CONTENTS	ii
LIST OF FIGURES.....	iii
LIST OF TABLES.....	iii
I. INTRODUCTION.....	1
A. Project Objectives	1
B. Project Components.....	1
II. OBJECTIVE AND SCOPE OF THE SOCIAL SAFEGUARDS INTERNAL MONITORING REPORT	5
A. Objective of Internal Monitoring	5
B. Scope of Social Safeguards Internal Monitoring.....	5
III. SCOPE OF PROJECT IMPACTS	6
A. Dieng 2 Sub-Project	6
B. Patuha 2 Sub-Project.....	6
IV. SOCIAL SAFEGUARDS PLANNING DOCUMENT IMPLEMENTATION PROGRESS	8
A. Consultation, Participation, and Information Disclosure	8
B. Progress of Social Safeguards Planning Document.....	14
C. Livelihood Restoration & Community Development Program Implementation Progress	17
D. Grievance Redress Mechanism	27
V. Institutional Support to Social Safeguards	31
A. Staff Support to Ensure Compliance.....	31
B. Funds Availability and Sourcing and Limitations to RP Implementation.....	31
VI. Other Concern, Notations and Corrective Actions	33
A. Loan Covenants Compliance Analysis	33
B. Compliance to Social Safeguards Policy Principles.....	35
C. Compliance with the Entitlement Matrix.....	37
D. Outstanding Issues on Resettlement, Corresponding Plan of Action and Status.....	37

LIST OF FIGURES

Figure 1. Layout of the Proposed Dieng-2 Expansion Components.	2
Figure 2. Power Plant & Surface Facilities for Patuha-2 Expansion Sub-Project.	3

LIST OF TABLES

Table 1. The status of accomplishments of civil work for each on-going project (June 2021).	4
Table 2. Status of Required Social Safeguards Documents as of (June 2021).	5
Table 3. Summary of Additional Land Acquisition for Wellpads Expansion.	6
Table 4. The Social Safeguards Planning Document.	7
Table 5. Summary of Consultations Held for Land Acquisition and RP Implementation for Dieng-2 Sub-Project, including for additional land requirements (January-June 2021).	9
Table 6. Summary of Other Consultations Related to Dieng-2 Sub-Project (January to June 2021). .	10
Table 7. Summary of Consultations held for Patuha-2 Sub-Project (January to June 2021).....	13
Table 8. Summary of Consultations Held in Dieng and Patuha as of June 2021.	14
Table 9. Summary of Additional Land Acquisition for Wellpads Expansion.	16
Table 10. Total Number of Ahs/APs Compensated.	17
Table 11. Livelihood Restoration Activities for Dieng-2 Sub-Project (Plan and Implementation as of June 2021).	19
Table 12. Implementation Schedule for Livelihood Restoration Plan and Enhancement.	22
Table 13. Implementation Schedule for Community Development.	23
Table 14. Community Development Activities in Patuha-2 Sub-Project.	25
Table 15. Implementation Schedule for Community Development.	26
Table 16. Grievance Redress Committee.	27
Table 17. Summary of Grievances/Complaints Received and Resolution Status for Dieng-2 and Patuha Sub-Project as of June 2021.	30
Table 18. Summary of Social Safeguards Budget Disbursement.	32
Table 19. Loan Covenants Compliance Analysis (as of June 2021).	33
Table 20. Social Safeguards Project Principles Compliance Analysis (as of June 2021).	35
Table 21. Compliance Assessment to The Entitlement Matrix as of June 2021.	38
Table 22. Outstanding Issues and Concerns.	42

I. INTRODUCTION

1. The Asian Development Bank (ADB), through Loan No. 3928 INO, is supporting PT. Geo Dipa Energy (CGE) to develop geothermal energy in Indonesia. The Loan is bound by obligations which include obligations for routine reporting of the Project's environmental and social activities, impacts and mitigations. This is the Project's second "Semi-Annual Social Safeguard and Resettlement Monitoring Report" for the period of January to June 2021.
2. The report objectives and scope are set out below and the Project Objectives and a description of activities are provided in Section I. Section II describes the objectives of this social safeguard monitoring report, while Section III explains the Scope of Project Impacts. Section IV presents Implementation Progress, whereas supporting arrangements for safeguard implementation are discussed in Section V, followed by additional notes, concerns and corrective actions in Section VI. The Project reports separately on progress in implementing the Gender Action Plan and Environmental Safeguard monitoring, also on a semi-annual basis.

A. Project Objectives

3. On 28 May 2020, the ADB approved a loan to GDE, guaranteed by the Republic of Indonesia, for Geothermal Power Generation Project, which included a \$300 million loan from ADB's ordinary capital resources (Loan 3928-INO) and a \$35 million loan from Clean Technology Fund (Loan 8380-INO). GDE will provide counterpart financing of \$134.2 million. The loan is set to close on 31 December 2024. GDE is the executing agency and the project management unit within GDE is the implementing unit of the project.
4. The project intends to support GDE to commission an additional 110 megawatts (MW) of geothermal electricity generating capacity—55 MW at the Dieng geothermal field in Central Java and 55 MW at the Patuha geothermal field in West Java. The project is aligned with the following impacts: (i) contribution to geothermal energy in Indonesian power supply increased and (ii) renewable energy in electricity subsector increased. Its outcome will be adequacy and sustainability of energy supply increased. The project comprises of three outputs: Output 1: geothermal power plants constructed and commissioned; Output 2: institutional capacity of GDE strengthened; and Output 3: Community development program enhanced (see detailed for eac output in the PAM)..

B. Project Components

5. The Project is comprised of sub-projects, with Dieng 2 located near Dieng town and Patuha 2 located near the Patuha village, in Banjarnegara Regency, West Java. The PMU responsible for safeguards operates out of the GDE office in Soreang in Bandung Regerncy. The 2 sites are approximately 440 km from each other, and from Soreang to Dieng is approximately 5-6 hours travel, and to Pathuha, 1 – 1,5 hours, by car. The sub-projects are outlined below, along with an overview of the local contexts for each site.

1. Dieng 2 Sub-Project

6. The Dieng Geothermal Expansion sub-project (Dieng-2) will include drilling of new wells for geothermal fluid production and re-injection, and developing a steam aboveground gathering system and fluid reinjection lines connecting wells and generating units. Dieng will have a combined cycle plant with both steam and Organic Rankine Cycle turbines. The sub-project will also support the systems of transmission interconnection between the plants and the grid. This will include a new 6-km underground transmission line to the Dieng Sub-Station. The GPDP will additionally strengthen GDE's capacity to develop and operate geothermal power plant and to enhance GDE's Community Development Program through more strategic engagement with the communities and to evaluate the program.
7. The project will contribute to the increased geothermal energy in Indonesia power supply in line with Electricity Power Supply Business Plan (RUPTL 2018 – 2027) and the increased renewable energy in energy electricity sector (first nationally determined contribution to the UNFCC). The

outcome will be the increase of the adequacy and sustainability of energy supply which targeted by 2027 that additional 770 GWh of geothermal electricity generated annually and at least 400,000 tons of CO₂ equivalent avoided annually. The sub-project (Dieng-2) will construct a new power plant, sub-station, transmission lines and pipelines. No new wellpads will be added, but 10 new wells¹ will be drilled on existing wellpads. The sub-project will include (a) drilling of new wells for geothermal fluid production and re-injection, (b) construction of fluid collection and re-injection systems, (c) power plant, and (d) transmission inter-connection systems.

8. The Dieng 2 sub-project faces technical challenges and is set in a context where there is high-density farming activities, particularly at the Dieng reservoir location. As part of ADB's assistance, the project will enhance health, safety, emergency planning, and livelihood opportunities for nearby communities. The Dieng-2 sub-project will not use any forest land except for laying of the proposed underground transmission line which will pass under an existing pipeline and inspection road right-of-way (ROW) through protection forest, for which GDE already has a permit (IPPKH). These activities will serve as an example for how Indonesia's geothermal resource in similar geographic contexts can be developed without detriment to the existing surroundings. Figure 1 provides a map of the location and- layout of the proposed Dieng-2 expansion components recommended by the Dieng and Patuha Feasibility Study approved by the GDE Board of Directors per August 2019.

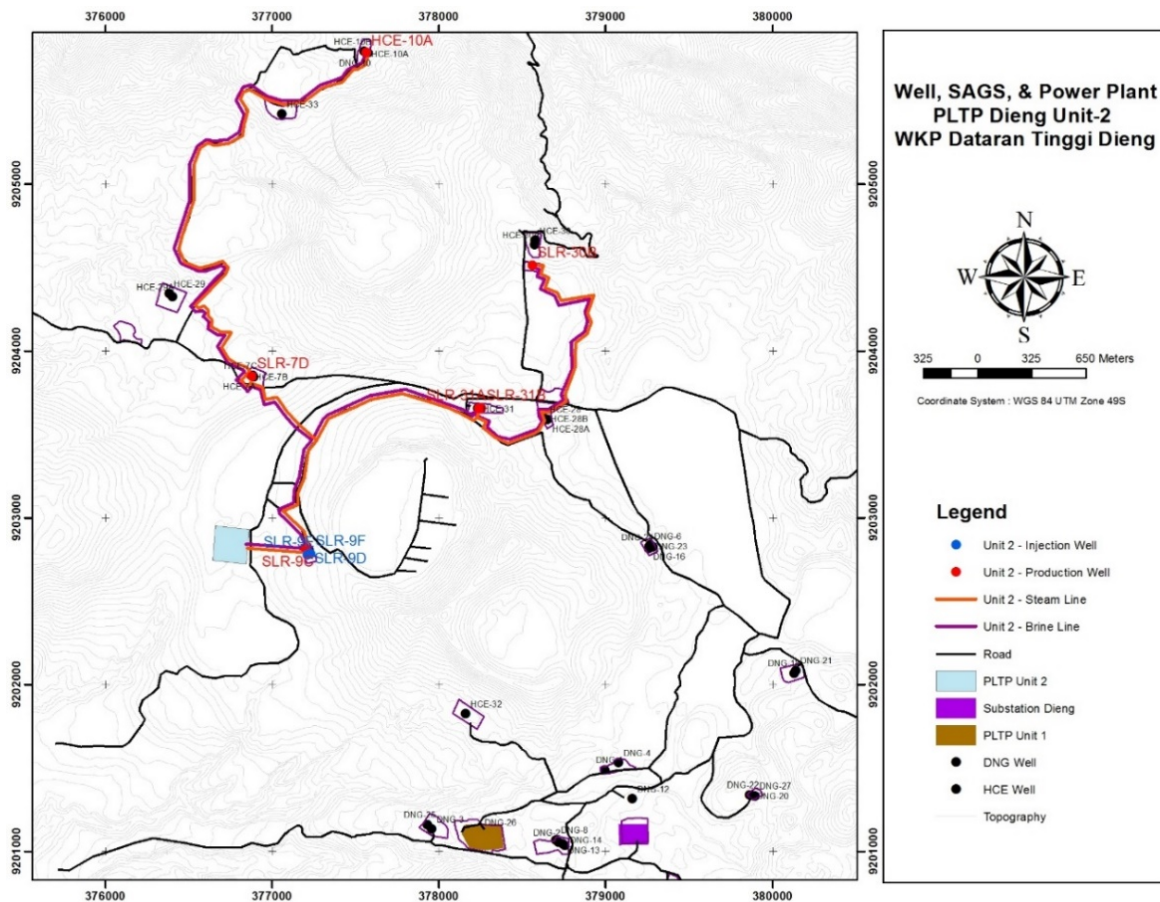


Figure 1. Layout of the Proposed Dieng-2 Expansion Components.

¹ 4 production wells, 5 injection wells and 1 contingency well

2. Patuha 2 Sub-Project

9. GDE's geothermal plant in Patuha is located in the mountain area of Ciwidey Sub-District (*Kecamatan*), Bandung Regency (*Kabupaten*), West Java Province. Patuha had been initially developed in 1996-1998 by Patuha Power Limited (PPL, a wholly owned company of CallEnergy, USA). CallEnergy exited Indonesia in 1999, and the Patuha field was taken over by GDE in 2002. In 2014 GDE commissioned Patuha Unit 1 Power Plant using the well that CallEnergy drilled. Space and facilities for the Patuha Unit 2 Power Plant and electrical connection have already been provided as part of Patuha Unit 1 construction.

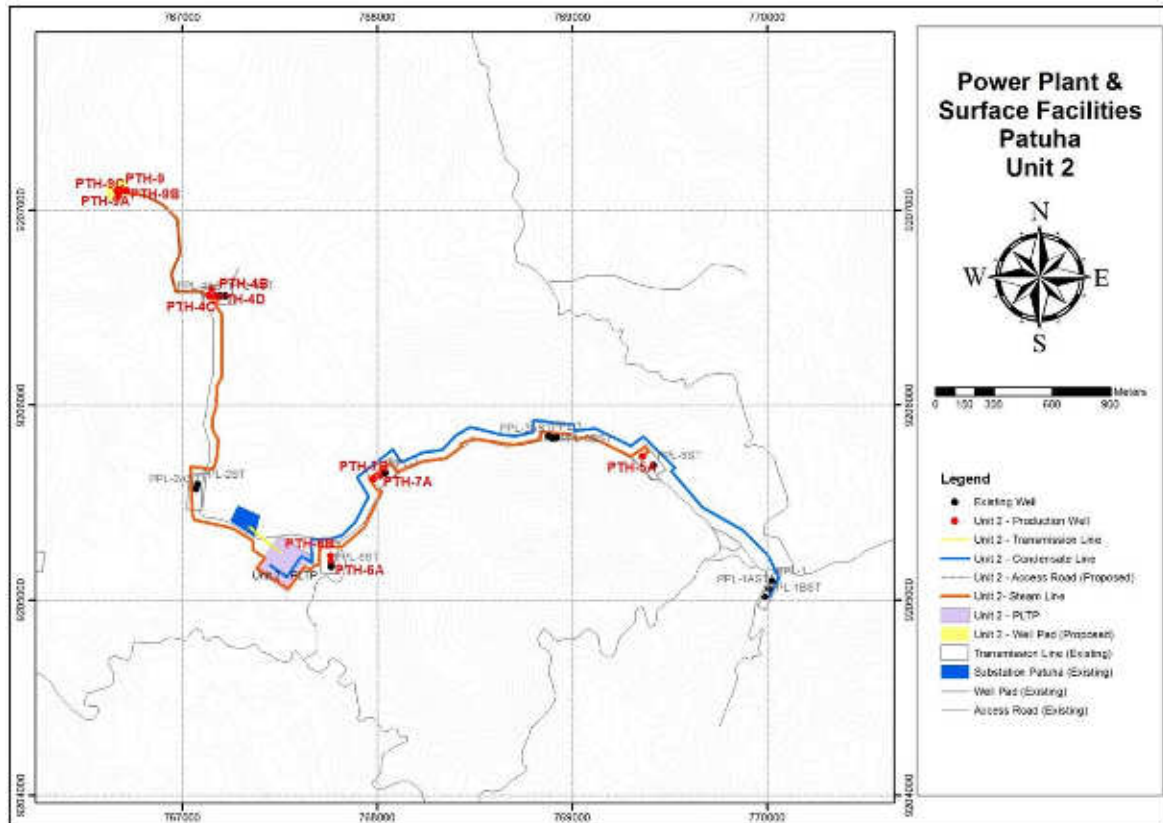


Figure 2. Power Plant & Surface Facilities for Patuha-2 Expansion Sub-Project.

10. Figure 2 above presents a lay-out map of the proposed Patuha-2 sub-project. The expansion of the existing geothermal facilities (Patuha-2 sub-project) will consist of the following components:

- i) construction of a new power plant - Patuha Unit 2 (Loc GPP);
- ii) the drilling of 11 new wells:
 - a) 9 new wells will be drilled in existing wellpads viz. Wellpad 4 (Loc G), Wellpad 5 (Loc W), Wellpad 7 (Loc V) and Wellpad 6 (Loc U), and
 - b) 3 new wells will be drilled in a new (proposed) wellpad - Wellpad 9 (Loc BB);
- iii) construction of new steam pipelines
 - a) from Wellpad 9 (Loc BB) to Wellpad 4 (Loc G) to the new power plant, and
 - b) from Wellpad 5 (Loc W) to Wellpad 7 (Loc V) to Wellpad 6 (Loc U) to the new power plant;
- iv) construction of a condensate line from the new power plant to existing Wellpad 1 (Loc A); and
- v) addition of a new transformer at the existing Patuha Sub-Station approximately 200 m from the power plant.

11. The existing Patuha power plant complex and Patuha-2 expansion sub-project area are quite isolated from the community. Several GDE power plants are located in the border area that cannot be traversed by community. Security personnel guard the complex around the clock.

3. Civil Works Status

12. There are several ongoing civil works which currently being executed in Dieng and Patuha. The main concern for Drilling Preparation in both location is the water supply, therefore the civil works for water supply must be the first to be prepared. Furthermore, civil work for Drilling preparation for Dieng and Patuha are still under procurement process.

Table 1. The status of accomplishments of civil work for each on-going project (June 2021).

No	Project/ Subproject	Contract Amount	Location	Starting date	Completion date	Scheduled accomp	Actual Accomplishment	Slippage
1	Land Working for Pond	IDR 3,789,500,000	Dieng- Patuha	October 8 th 2020	August 7 th 2021	75.00%	60.00%	- 20.00%
2	Geomembrane Installation	IDR 6,490,000,000	Dieng- Patuha	October 8 th 2020	October 7 th 2021	65.00%	64.50%	- 0.50%
3	Water Supply Pipeline	IDR 21,208,000,000	Dieng- Patuha	December 30 th 2020	May 29 th 2021	100.00%	100.00%	
4	Cipaku – Pond J Pipeline	IDR 8,254,400,000	Patuha	October 8 th 2020	April 25 th 2021	100.00%	100.00%	
5	Temporary Office & Warehouse	IDR 5,376,800,000	Dieng- Patuha	January 4 th 2021	April 14 th 2021	100.00%	100.00%	
6	Pad 38 Fencing	IDR 2,480,500,000	Dieng	October 21 st 2020	January 19 th 2021	100.00%	100.00%	

II. OBJECTIVE AND SCOPE OF THE SOCIAL SAFEGUARDS INTERNAL MONITORING REPORT

A. Objective of Internal Monitoring

13. The objective of the semi-annual monitoring report is to report on the implementation progress of land acquisition and resettlement activities for the past six months, including the implementation of livelihood restoration programs. This is to help ensure that the activities are implemented as planned and that mitigating measures designed to address adverse social impacts are adequate and effective. The scope of the monitoring includes, but is not limited to:

- i. Payment of compensation to all affected persons (APs) in various categories, according to the compensation policy described in the Social Safeguards Documents.
- ii. Delivery of income restoration and social support entitlements.
- iii. Public information dissemination and consultation procedures.
- iv. Adherence to grievance procedures and outstanding issues requiring management's attention.
- v. Prioritization of APs regarding the engagement and support options offered.
- vi. The benefits generated from the subprojects.
- vii. Assessing the impacts and outcomes of social safeguards activities on the standards of living of APs/customary communities.

B. Scope of Social Safeguards Internal Monitoring

14. Table 2 below summary of the required social safeguards planning document for Dieng 2 subproject and Patuha 2 subproject. All planning document has been approved by ADB in September 2019 before loan signing. In the process, GDE has evaluated the project design and found that additional land acquisition was required for wellpad 7, 9, and 30 expansion. Total area of 11,229 m² (~1,1 Ha) was then considered as additional to project impact. The additional land is not covered under the approved LARP 2019, therefore a new LARP will be prepared and be finalized on December 2021.

Table 2. Status of Required Social Safeguards Documents as of (June 2021).

Subproject	Social Safeguards Document & Status		Remarks
	Document	Status	
Sub project Dieng 2	Draft LARP	Cleared by ADB September 2019	
Subproject Dieng 2	New LA RP	Being prepared, expected submitted to ADB for approval by Dec 2021	Covered additional land for expansion of wellpad 7,9,30 which is not covered under LARP 2019
Subproject Patuha 2	Due Dilligence Report	Cleared by ADB September 2019	

III. SCOPE OF PROJECT IMPACTS

A. Dieng 2 Sub-Project

15. The main social impacts associated with Dieng 2 Sub-Project are changes in land ownership and land/resource usage, community employment / economic profile, community perception. There are also impacts on vulnerable people identified through studies, as discussed as part of the scope of impacts below.
16. According to the draft RP 2019, the expansion of the existing Dieng Geothermal Plant will require a total of 30.83 Ha. Of this, 30.53 Ha of land is already owned by GDE, while the remaining 3,010 m² is privately owned land to serve as the Right of Way (ROW) the construction of a new pipeline and inspection road connecting Wellpad 9 to the Dieng-2 power plant.
17. A total of 5.7 ha GDE-owned land (ex Mess GDE site) has been cleared for the project. This site is located in Karangtengah Village and used to be leased on an annual basis to a farmers' group - *Kelompok Sadar Alam dan Tani "Merdada Sejahtera."* A total of 23 (twenty three) tenant farmers (79 APs) has lost access to productive arable land which they used to lease for between 10-20 years. Land acquisition and cessation of activities on land currently owned by GDE identified for Dieng-2 development will affect 28 households (102 persons) and 4 lease coordinators (21 persons). All Affected Households (AHs) reside in Karangtengah Village, Batur Sub-District, Banjarnegara Regency. No relocation had been required, however, many (24-twenty four) of the affected families are considered to have severe impacts (i.e. lose 10% or more of access to productive land and/or income) and 14 (fourteen) AHs are also categorized as vulnerable². All of the affected household data based on the categorization mentioned can be seen in the **Appendix A**.
18. In the process, GDE has evaluated the project design and found that additional land acquisition was required for wellpad 7, 9, and 30 expansion. Total area of 11,229 m² (~1,1 Ha) was then considered as additional to project impact, as shown in Table 3 The additional land is not covered under the approved LARP 2019, therefore a new LARP will be prepared and be finalized on December 2021.

Table 3. Summary of Additional Land Acquisition for Wellpads Expansion.

No	Components	Well	Village	Area (m ²)	Land Owner
1	Wellpad 7	SLR-7D	Karangtengah	+ 5,663	1 people
2	Wellpad 9	SLR-9E		+ 2,872	1 people
		SLR-9D			
		SLR-9C			
3	Wellpad 30	SLR-30B		+ 2,664	1 people
TOTAL				+ 11,229	

B. Patuha 2 Sub-Project

19. The main social impacts associated with Patuha 2 Sub-Project are changes in land ownership and land/resource usage, community employment / economic profile, community perception. The planned construction of the second unit plant in close proximity to the Sugihmukti village will also cause demographic changes (population increase), related pressure on resources and facilities and may lead to many community disturbances (potential noise, water and air quality issues) as well as bringing economic opportunities as both primary and secondary impacts.

² Vulnerable affected households are those classified as households headed by women, elderly, or disabled, (ii) households falling under the generally accepted indicator for poverty, (iii) landless households, and (iv) ethnic minorities.

20. Most of the land required for the sub-project is already owned by GDE. An additional 28,000 m² (or 2.8 Ha) needs to be acquired. The required permits-for-use-of-forest-area (IPPKH) from Perum Perhutani has been processed (the proposed letter for this process can be seen in the **Appendix G**). There will be no involuntary resettlement impacts - no privately-owned land or assets will be affected; no land users will be affected and no crops cultivated by land users have been identified in the protected forest area. Plantation workers still have access to their workplace (tea gardens and factory).
21. The proposed Patuha-2 expansion involves acquisition of additional land for 3 (three) new wellpads (PTH 9, 9A, and 9B), access roads, and steam pipelines. There will also be drilling of 9 (nine) new wells in existing wellpads which will not require land acquisition. Land to be leased for project expansion components are located in protected forest under the jurisdiction of Perhutani. There are no people residing or using the forest to farm or for other livelihood purposes. The Patuha-2 field lay-out is shown in Figure 2.
22. Summary of impacts as per social safeguards planning document can be seen in Table 4 below

Table 4. The Social Safeguards Planning Document.

LAR impact	Dieng 2 Project (LARP)	Patuha 2 Project (DDR)
Privately owned land	3,010 m ²	No
Affected crops (seasonal crops)	43,735 m ²	No
AHs /APs	33/127	No
Affected land owners (AHs/APs)	6/27	No
Affected land users	23/79	No
Leasing coordinator	4/21	No
Severely AHs/APs	24/86	No
Vulnerable AHs/APs	14/47	No
Estimation Budget (USD)	1,478,803	1,434,802.*

Noted : *) for corrective action

IV. SOCIAL SAFEGUARDS PLANNING DOCUMENT IMPLEMENTATION PROGRESS

23. This section of the semi-annual monitoring report presents the progress in implementing Project commitments for social and land acquisition and resettlement-related activities. The Dieng 2 sub-project is discussed, followed by Patuha 2 sub-project. Activities related to grievance handling are reported in the latter section.

A. Consultation, Participation, and Information Disclosure

1. Dieng 2 Sub-Project

24. **In the previous semi-annual monitoring report**, the main consultation activities were related to the management of the land clearing process, where consultations started in July 15th 2020 and the compensation itself was delivered in October 7th 2020. As additional land was needed, for the land acquisition process, GDE conducted consultations in parallel with a Socio-Economic Survey in December 2020. GDE has also conducted consultations related to surface water utilization (for drilling activities), provided a project update to stakeholders, and conveyed local worker requirement.

25. **Consultation during January – June 2021 periods.** Between January and June 2021, GDE has continued its consultation activities, albeit with some limitations due to COVID-19 restrictions. The Project has managed to have small group and individual meetings on a variety of topics including project updates, recruitment, land acquisition, community development programs and grievances. The land acquisition consultations concerned the need for additional land for wellpads expansion. During February 2021 the APs were informed about the postponement of Land Acquisition process, as summarized in Table 5.

26. Others consultations are summarized in Table 6, including related to the grievance handling process (use of the Project Grievance Redress Mechanism). The project has not consistently recorded all consultations in the form of minutes during this period, as many meetings were small in nature and sometimes adhoc. Nevertheless, a format and protocol for recording all future consultations has been discussed and will be developed in conjunction with the incoming PMU, so that stakeholder input from consultations can be more fully reported in the future semi-annual monitoring reports.

27. **Information Disclosure.** The Dieng 2 RP (2019) has been publicly disclosed on ADB's website since November 2019. The summary of the RP has also been distributed to AHs/APs and to communities surrounding the project on October 2019 in the form of a project information booklet. The Project has also conveyed internally, to GDE corporate communications, the requirement for disclosure on GDE website. This is also to be active in the next reporting period, and will be continuously maintained or updated.

Table 5. Summary of Consultations Held for Land Acquisition and RP Implementation for Dieng-2 Sub-Project, including for additional land requirements (January-June 2021).

Consultation Topic	Date	Venue	Participants		Objective and Content
			M	F	
Land Acquisition Process and Updates	January 6 th 2021	Karangtengah Village	9	3	To clarify the extent of the area needed for wellpad-30 expansions (Disseminated information on the scope of additional land)
Land Acquisition Process Discussion and Review	January 12 th 2021	GDE Dieng Office, Dieng 2 powerplant site, Wellpad-9	5	6	Field observation by BPKP as part of land acquisition procedure audit
Land Acquisition Process and Updates	January 12 th – 13 th 2021	Karangtengah Village	4	2	To clarify the extent of the area needed for wellpad-7 expansions
Land Acquisition Process and Updates	January 25 th 2021	Karangtengah Village	4	1	To clarify the extent of the area needed for wellpad-30 expansions
Land Acquisition Process Discussion and Review	January 28 th 2021	Basement Cafe and Resto Meeting Room, Wonosobo	4	1	To clarify the activities conducted by Public Appraisal (KJPP)
Land Acquisition Process and Updates	February 25 th 2021	Karangtengah, Dieng Kulon Village AHs house (door to door consultation)	7	4	Inform the land owners on the postponement of land acquisition and the back round/reason; AHs understood/accepted the reason and asking GDE to keep update information
Land Acquisition Process Discussion and Review	March 10 th 2021	Holiday Inn Meeting Room Semarang	5	1	To review/clarify the references used in appraisal calculation
Land Acquisition Process Discussion and Review	June 24 th 2021	Banjarnegara Regional Secretary Office	7	5	To clarify steps needed to be taken in Land Acquisition process

Table 6. Summary of Other Consultations Related to Dieng-2 Sub-Project (January to June 2021).

No	Date	Topic	Key Issues	Meeting Type / Method	Venue	Participants		Key Person Present (PMU/PMC/Stakeholders)
						M	F	
1	7-Jan-21	Grievance Redress Mechanism Socialization	To clarify the GRM and its workflow for delivering solutions	Socialisation	“Pendopo Dieng” Meeting Hall, Dieng Kulon Village	29	3	<ul style="list-style-type: none"> - District Communication Forum “Forkompinca” - Village Head/Government - Community representatives - HSE & Safeguard - Project Dieng 2
2	10-Feb-21	Project Updates	Environmental issues (specially for water/springs) were highly concerned by the people of Bakal Village as they are living relatively in lower elevation from the powerplant site	Socialisation	Bakal Village	27	6	<ul style="list-style-type: none"> - Village Head/Government - Community representatives - HSE & Safeguard - Project Dieng 2
3	23 - 26 February 2021	Project Updates to Women Group	Alternative programs targeting women communities and to disclose GDE’s GRM	Socialisation	Bakal, Karangtengah, Pranten, Kepakisan, Sikunang, Dieng Kulon Village	12	119	<ul style="list-style-type: none"> - Women representatives - HSE & Safeguard - Project Dieng 2
4	24-Feb-21	Project Updates to Karangtengah Youth Group	Alternative programs targeting youth communities	Socialisation	M.O. Café, Dieng Kulon	6	1	<ul style="list-style-type: none"> - Youth Group representatives - HSE & Safeguard
5	5-Apr-21	Project Updates and Waterwell Handover Ceremonial	Waterwell followup plan alternatives	Socialisation	Pendopo Dieng Meeting Hall, Dieng Kulon Village	34	3	<ul style="list-style-type: none"> - Head of ESDM Central Java Province on behalf Governor

No	Date	Topic	Key Issues	Meeting Type / Method	Venue	Participants		Key Person Present (PMU/PMC/Stakeholders)
						M	F	
								<ul style="list-style-type: none"> - GDE's President Director - GDE's Dieng and Project General Manager - Village and community representatives
7	19-Apr-21	Local Worker Mechanism Discussion	Recruitment process	Discussion	Pamit Kopi, Dieng Kulon Village	10	1	<ul style="list-style-type: none"> - Village Head - HSE & Safeguard - Project Dieng 2
8	20-Apr-21	Occupational Discussion	Staple foods proposal	Discussion	Karangtengah Village	4	1	<ul style="list-style-type: none"> - Village Head - HSE & Safeguard - Project Dieng 2
9	3 and 6 May 2021	Project Updates	Aspirations: to intensify consultation and to make sure that nearby communities getting direct positive impact of the project	Socialisation	MO Café, Dieng Kulon. Sate Pak Yani Resto, Wonosobo	18	8	<ul style="list-style-type: none"> - Village Government - Project Dieng 2
10	2 - 3 June 2021	Occupational Community Development Discussion	Strategies and alternatives for delivering water to communities	Discussion	Karangtengah, Kepakisan, Bakal, Dieng Kulon, Sikunang, and Pranten Villages	18	15	<ul style="list-style-type: none"> - Village Head - HSE & Safeguard - Project Dieng 2
11	24-Jun-21	Local Worker Mechanism Discussion	Recruitment process	Discussion	Disnaker PMPTSP Banjarnegara (labour) Office	6	5	<ul style="list-style-type: none"> - <i>Disnaker</i> PMPTSP - HSE & Safeguard

2. Patuha 2 Sub-Project

28. **In the previous semi-annual monitoring report**, the main activities in November – December 2020 were to consult stakeholders on the schedule of Patuha-2 Sub-Project, including the local government/*Forkompinca* and media crews, and to have initial discussions on the local hire recruitment process.
29. **Consultation during January – June 2021 period.** Between January and June 2021, GDE continued its consultation activities, albeit with some limitations due to Covid restrictions. The Project has managed to have small group and individual meetings on a variety of topics including project updates, local hiring/ recruitment, womens' involvement and grievances, as summarised in Table 7. The project has not consistently recorded all consultations in the form of minutes during this period, as many meetings were small in nature and sometimes adhoc. Nevertheless, a format and protocol for recording all future consultations has been discussed and will be developed in conjunction with the incoming PMU, so that stakeholder input from consultations can be more fully reported in the future semi-annual monitoring reports.
30. **Information Disclosure.** The approved DDR has publicly disclosed in the ADB website on November 2019. The summary of DDR in the form of a project information booklet (PIB) in Bahasa Indonesia has also distributed to the community of three villages surrounding Patuha 2 project, i.e village of Sugihmukti, Alamendah, and Panundaan by October 2019. **Appendix F** presents evidence of these distribution activities.

Table 7. Summary of Consultations held for Patuha-2 Sub-Project (January to June 2021)

No	Date	Topic	Key Issues	Venue	Meeting Type / Method	Participants		Key Person Present (PMU/PMC/Stakeholders)
						F	M	
1	1-Feb-21	Local Worker Mechanism	Recruitment Process	Meeting Point Café, Bandung	Discussion	2	8	<i>Dinas Ketenagakerjaan</i> Kabupaten Bandung, Project General Manager, General Support Manager, HSE and Safeguard Manager and team.
2	3 - 4 Mar 2021	Project Updates to Women Group	Alternative programs targeting women communities and to disclose GDE's GRM	Alamendah, Panundaan, and Sugihmukti Village	Socialisation	127	22	Women representatives (village, UMKM and PKK)
3	7 - 11 Mar 2021	Grievance Redress Mechanism Socialization	Disclose GDE's GRM to stakeholders	Pasirjambu, Ciwidey, and Rancabali sub-district area	Socialisation (door to door)			Forkompinca and village leaders
4	23 - 26 Apr 2021	Focused Social Monitoring	Monitor social impact caused by the incident (trailer)	Alamendah Village	Monitoring	4	19	- HSE & Safeguard Manager - Contractor - Project Patuha 2
5	5-May-21	Project Updates	Clarify project implementation schedule	D'Riam Riverside Resort, Ciwidey	Socialisation	7	29	Forkompinca and village leaders

31. Summary of consultations held as of June 2021, both in Dieng 2 and Patuha 2 can be seen in the Table 8 below .

Table 8. Summary of Consultations Held in Dieng and Patuha as of June 2021.

No	Subproject	Total Number of Consultations conducted as of this period			Total accumulated No of Consultation conducted during implementation		
		Total Consultation	Total Attendance		Total Consultation	Total Attendance	
			M	F		M	F
1	Dieng 2	27	259	210	50	769	391
2	Patuha 2	11	100	143	15	299	170

B. Progress of Social Safeguards Planning Document

1. Dieng 2 Sub-Project

a) Land Clearing

32. As indicated in the Dieng 2 RP (2019), a total of 4 Ha GDE-owned land (ex Mess GDE site) has been cleared for the project. This site is located in Karangtengah Village. The land clearing was carried out following the procedure set forth in the Presidential Regulation No. 62/2018 with the involvement of “*Tim Terpadu*” (Integrated Team) established by Central Java Governor.

33. Based on the recommendation by the Integrated Team and legalized by Central Java Governor’s Decree, compensation was provided for eligible APs including all APs identified in the Dieng 2 RP (2019) and the 4 (four) leasing coordinators. The compensation received by the APs and 4 (four) coordinators was fully complied with the entitlement set forth in the Dieng 2 RP (2019), as shown in **Appendix B** and summarised here:

- i. The 23 (twenty three) tenant farmers entitled to get cash compensation for their loss of income equivalent to 2 years of net product market value and they were allowed to harvest prior to land clearing;
- ii. The amount of compensation was determined by the independent appraiser using the income approach and considering Highers and Best Use (HBU). The different amount of compensation (between the amount indicated in the RP Dieng 2 (2019) and that paid) was due to different types of crops planted on the affected area when verification was carried out by the Integrated Team; and
- iii. Four leasing coordinators have been hired as GDE or project workers.

b) Land Acquisition for 6 Land Owners

34. GDE has planned to acquire an additional 3,010 m² land that will be required for a 10 m wide and approximately 301 m long corridor to serve as the Right-of-Way (ROW) for construction of a new pipeline and access road from Wellpad 9 to the proposed site of the Dieng-2 power plant. As indicated in the RP of 2019, the required land is owned by 6 people. As the land to be acquired is

considered a small area (3,010 m²), according to the Indonesian legal framework, land acquisition with an area less than 5 Ha can be undertaken through direct transaction with the land owners.³

35. In the previous semi-annual monitoring report, it was stated that GDE had conducted consultations (dated 23-24 August 2020) with 6 (six) land owners regarding their willingness to sell their land. During these consultations the AHs asked for an irrational price, which was much higher than the price recommended by the appraiser and the market price. GDE also requested clarification of the spatial planning suitability for this 6 (six) parcels of land (and power plant site) to Head of DPUPR Banjarnegara by letter No. 349/PRO.00-GDE/XII/2020 dated 17 December 2020. This was replied to by DPUPR's letter No. 050/35/I/TR-DPUPR/2021 dated 14 January 2021 confirming the spatial planning suitability both for the ROW (between wellpad 9 and power plant site) and the power plant site.
36. Considering the development for ROW is to be done relatively later, and the land acquisition for this will be processed after final design of the ROW expected in mid 2022., on 25 February 2021 GDE consulted with the AH about the postponement of land acquisition process.

c) Additional Land Acquisition

37. GDE has formally informed ADB, through the letter No. 275/PST.00-GDE/VIII/2020 dated 14 August 2020, that according to the final design, the additional land needed (± 11.229 m²) was to be used for (i) drilling new wells in the expansion area of wellpads 7, 9, and 30, and (ii) temporary road access for material and equipment to wellpad 30. As specified in the Dieng 2 RP (2019), an updated RP needs to be prepared for this additional land acquisition. As agreed during the pre-inception mission on September 2020, ADB was to hire international social safeguards expert and continue using existing national experts to support the RP updating, while GDE will provide all necessary data and results of consultations. Following are some actions have been taken in order for the updated RP to be prepared on schedule.
38. In the previous report, it has been stated that GDE conducted a door to door consultation to the 6 land owners potentially affected by the new wells and temporary access road. The consultations were conducted in 28 September - 1 October 2020, with the involvement of local government and community leader. In these consultations, GDE also sought the feedback from potential AHs/APs on the project plan, as well as their initial willingness to sell their land. The initial of Socio Economic Survey (SES) of land owners was also carried out in December 2020. This survey was required to get initial social economic data and as the basis data for the screening checklist table.
39. GDE LAT proposed to its BOD the revised additional land acquisition scheme from 19.900 m² to $\pm 11,219$ m² through a letter No. 016/PRO.08-GDE/II/2021 dated 19 February 2021 (see the **Appendix B**). The basis of GDE LAT proposal was to revised additional land requirement with its technical justification dated 19 February 2021. Several discussions then were held between Drilling team, Engineering Team, Subsurface team and GDE LAT, followed by GDE LAT's letter No. 046/PRO.08-GDE/V/2021 concerning land acquisition technical justification dated 21 May 2021. The agenda of this was the proposed land acquisition method. In summary, the additional land acquisition process has been approved in BOD Minutes of Meeting (*Notulen Rapat Direksi*) No. 16 dated 15 June 2021.
40. In order to be able to revise the 2019 RP, additional data (for 1 AP) has been collected and elaborated with the previous SES conducted in December 2020. Table 9 below shows the Updated Project Components and Land Requirements for the Proposed Dieng Geothermal Power Plant

³ see Government Regulation No. 19/2021 and Ministry of Agrarian and Spatial Planning/National Land Agency No.19/2021.

Expansion. In total, ± 11,229 m² area is needed for wellpad 7, 9, and 30 expansions. The 2019 RP is yet to be updated with this additional data.

Table 9. Summary of Additional Land Acquisition for Wellpads Expansion.

No	Components	Well	Village	Area (m ²)	Land Owner	Name
1	Wellpad 7	SLR-7D	Karangtengah	± 5,663	1 people	Hadrati
2	Wellpad 9	SLR-9E		± 2,872	1 people	Mulyono
		SLR-9D				
		SLR-9C				
3	Wellpad 30	SLR-30B		± 2,664	1 people	Kholifin
TOTAL				± 11,229		

2. Patuha 2 Sub-Project

41. Below are report on the implementation of some corrective action as listed in the DDR Patuha 2 as of June 2021.

42. **Land acquired and leased from PTPN VIII Rancabolang.** This land was leased for pipeline, and the lease expired in December 2020. The procedure of renewal extension refers to the GDE's Decree No. 014.2.SK/PST.00-GDE/VI/2015 concerning Standard Operation and Procedures, section 18 on Procedure of Procurement and Borrowing of Plantation Land. A principle permit on the renewal extension of land lease was signed by the PTPN 's director on 25 October 2020. Based on this principle permit, PTPN agreed to renew the extension for the next 10 years. PTPN VIII Rancabolang has approved the addendum agreement No. PRJ/III.4/1876/XI/2020; 029/PJ/PST.00-GDE/XI/2020 on 26 November 2020, the validity period remains until 16 December 2030.

43. **Issuance of IPPKH.** Land is to be acquired is for components: (i) Proposed new wellpad (for 3 new wells) at Loc BB, and (ii) proposed new right-of-way (ROW) for new pipeline and access road from Loc BB to Loc G. The location of both components are located in protection forest. The progress on this acquisition process is reported above (see Tables 3 and 4), and will be implemented once the Regent (Bupati) endorsement is provided. The IPPKH document can be seen in the **Appendix G**. A new RP will be prepared to cover this land transaction. Furthermore, due to the recent changes in the process of IPPKH submission from Minister of Environment & Forestry (MoEF) to the Capital Investment Coordinating Board (BKPM) through Online Single Submission (OSS), the complete IPPKH permit application has been submitted on 1 October 2020 to BKPM. GDE obtained Borrow to Use of Forest Area Permits (IPPKH) No. SK.32/1/KLHK/2021 from BKPM dated 18 January 2021 (the document can be seen in the **Appendix H**). As stipulated in the IPPKH, GDE has to implement some obligations as a consequence of IPPKH issuance. Below are some of the obligations implemented as of June 2021:

1. Demarcation activities of IPPKH Patuha-2 were conducted on 18 – 20 May 2021 with supervision of BKPH XI Yogyakarta. Demarcation report has been compiled by BPKH XI Yogyakarta, *Dinas Kehutanan* (Forestry Agency) West Java Province, and Perum Perhutani Regional Division of West Java and will be submitted to MoEF.
2. Tree inventory activity was conducted on 19-20 May 2021 with supervision by BPHP Lampung. Tree inventory report will be provided by BPHP in May 21 2021 Compensation fee for investment value in IPPKH area has been paid on June 2021 to Perum Perhutani (The document can be seen in the **Appendix I**).
3. Once the forestry replacement land is determined, GDE will start the survey to prepare a resettlement plan (RP).

44. **Summary.** Table 10 below are summarized implementation of compensation payment for Dieng 2 subproject, while Patuha 2 subproject does not IR trigger.

Table 10. Total Number of Ahs/APs Compensated.

No	AHs Category	No of AHs/APs ad of LARP 2019		Total Paid as of this period (Jan-June 2021)		Total Accumalated payment	
		Total AHs	Total APs	Total AHs	Total APs	Total AHs	Total APs
Dieng 2 Sub-Project							
1	Affected land owners (AHs/APs)	6	27	0	0	0	0
2	Affected land users	23	79	23	79	23	79
3	Budget	USD 190,845		USD 103,721		USD 103,721	

C. Livelihood Restoration & Community Development Program Implementation Progress

1. Dieng 2 Sub-Project

45. Based on Dieng 2 RP (2019), income and livelihood restoration activities will be provided to severely APs and vulnerable APs to ensure their living standard will not be worse off due to the Project and to restore it to its pre-Project level, if affected. The Inventory of Losses (IOL) and Social-Economic Survey (SES) found that there are 24 potentially severely affected households (86 persons) and 14 vulnerable households (47 persons). As such, these are the target beneficiaries of the livelihood restoration activities. In addition, the Project provides support for various activities and infrastructure to support local community development. Livelihood restoration and community development implementation during the reporting period is presented in summary below.
46. The livelihood-related programs developed by DGE through consultation with the affected households include opportunity of employment during construction, vocational training, and scholarships, procurement of equipment and materials, and capacity building for the improvement of their current micro-enterprises/businesses. The activities are being implemented over a period of three years after the compensation payment and during construction, and are monitored and reported on bi-annually, to ensure effective and sustainable restoration of livelihoods. The income and livelihood restoration program for land acquisition impacts will also be expanded to the persons affected temporarily during construction and to residents living near to project areas, as project beneficiaries. The LRP activities outlined in the Dieng 2 RP (2019) are described below and shown in the Table 11 along with a status update on the program implementation.
47. Implementation of the LRP programs for Dieng 2 (2019) was bit delayed during the reporting period due to restrictions associated with Covid 19, specifically the training programs that were initially scheduled to be held in 2020 shifted/just started in 2021. Below are some details of the Dieng 2 2019 LRP activities that have been implemented between January and June 2021:
48. **Employment.** Total 4 former coordinators have now been given a job referring to contract No. 243/PKWT/KDP-DNG/X/2020 which started from October 2020. Furthermore in this January – June period, GDE has also coordinated with *Disnaker PMPTSP* Banjarnegara to develop a recruitment committee system for fulfilling human resources need in Dieng 2 project. GDE has planned to conduct dissemination of local recruitment information and to establish the Local Hire Recruitment Committee by July 2021.
49. **Vocational Training.** GDE has delivered the first batch training class of welding, conducted for 10 persons from Karangtengah villager in May 2021. This training was held based on the requested through the Head of Village's letter No. 474/50/2021 dated 8 February 2021. Other batches are

planned to be delivered in next semester (July – December 2021) aimed for the people of Dieng Kulon, Kepakistan, and Bakal Villages.

50. Other activities related with the Livelihood Restoration Plan and Enhancement are still in the procurement process, i.e. (i) Carica processing and marketing and (ii) Local food producing, processing, and marketing, and (iii) to provide Scholarship. An example of the TOR for the procurement of services to deliver these activities is provided in **Appendix E**. Table 12 below shows the implementation scope and planned timing for these activities. Participation will prioritise the AH, however it is noted that the AH are generally more advantaged than the wider village populations, such that most beneficiaries will be other community members, not AH.

Table 11. Livelihood Restoration Activities for Dieng-2 Sub-Project (Plan and Implementation as of June 2021).

TYPE OF ACTIVITY	TARGET PERSON / GROUP	Target Participants		Participated Participant as of June 2021		Summary of LRP implementation and Status*
		Severely AHs and vulnerable Ahs	GDE's Neighboring Communities ⁴	Severely AHs and vulnerable Ahs	GDE's Neighboring Communities ⁵	
1. Employment for unskilled labour at GDE Dieng (inc. project related work)	AH members, community members	24 Vulnerable/Severely HH members from Karang Tengah and lease 4 coordinators	30 community members from 6 villages	4 lease farmers coordinator hire as a worker	0	The program began in 2020. This program is implemented to improve the skills of local communities and AHs categorized as vulnerable and severity, so that they can be ready to be Project workers or for other available job opportunities. Next step activities will be coordinated with district labor agency to create Recruitment committee / System.
2. Scholarships and board and lodging allowance	Students from AHs	24 students.	30 students from 6 villages	0	0	<ul style="list-style-type: none"> This program is intended so that AHs and local people categorized as poor can continue their education to a higher level. Next step activities is the procurement process for management of this program. Procurement preparation with 10% progress both in Dieng and Patuha.
3. Value chain analysis,	Women	Value chain analysis will	6 groups in 6 villages	0	0	<ul style="list-style-type: none"> This program is implemented in Dieng specifically for women. The program

⁴ Vulnerable households.

⁵ Vulnerable households.

TYPE OF ACTIVITY	TARGET PERSON / GROUP	Target Participants		Participated Participant as of June 2021		Summary of LRP implementation and Status*
		Severely AHs and vulnerable Ahs	GDE's Neighboring Communities ₄	Severely AHs and vulnerable Ahs	GDE's Neighboring Communities ₅	
development for carica processing and marketing (including permits/certification).		benefit all carica home industries. 24 Vulnerable/ Severely HH members	(5-7 people per group) ~ 30-42 people			objective is to analyze the market aspects of Carica processing (including permit/certification). <ul style="list-style-type: none"> Procurement preparation with 10% progress.
4. Value chain analysis and development for processing and marketing of potato crisps and crisps from tubers (cassava, yam, sweet potato) including permits (certification)	Women	Value chain analysis will benefit all similar home industries 24 Vulnerable/ Severely HH members	1 group per village (6 people per group) – 36 people			<ul style="list-style-type: none"> This program is implemented in Patuha specifically for women. The program objective is to analyze the market aspect of potato crisps and crisps from tubers including permit (certification). Next activities is procurement process for the program implementation. Procurement preparation with 10%

TYPE OF ACTIVITY	TARGET PERSON / GROUP	Target Participants		Participated Participant as of June 2021		Summary of LRP implementation and Status*
		Severely AHs and vulnerable Ahs	GDE's Neighboring Communities ₄	Severely AHs and vulnerable Ahs	GDE's Neighboring Communities ₅	
5. Training, mentoring for the following: a) mechanic, b) welding, c) sewing d) craft	Various	24 Vulnerable/ Severely HH members	30 persons for types of training (from all 6 villages).		The first batch of Welding training were held for 10 participants from karangtengah villages.	<ul style="list-style-type: none"> • Welding and mechanics training started with discussion held with nearby polytechnic institution "Politeknik Negeri Semarang" in February 2021. • The training was held in few batches, Batch-1 allocated for Karangtengah village corresponds to village head letter number 474/50/2021 dated February 8th, 2021. • The second batch will be conducted in second semester 2021. The participants will be selected in Desa Dieng Kulon, Desa Bakal, Desa Kepakistan and Desa Karangtengah.

- LRP implementation summary has been compiled based on information in the Quarterly Report and on GDE's PowerPoint presentation materials to ADB during the August 2021 monitoring mission.

Table 12. Implementation Schedule for Livelihood Restoration Plan and Enhancement.

No	Program Name	Implementati on Schedule	Venue	Intended Number of Participants	
				AH's	Local Community
i	Carica processing and marketing	August 2021 – February 2022	Dieng	24 AHs	30 – 42 people
ii	Local food production, processing, and marketing	August 2021 – February 2022	Patuha	24 AHs	30 – 42 people
iii	Scholarships	July 2021 – June 2022	Dieng and Patuha	24 student from AHs	30 students from 6 villages

51. In addition to the livelihood activities to be delivered as part of the RP, there are other activities that should be carried out under the GDE community development program. Below are the other activities and details on the progress during the reporting period, January to June 2021.

- a. Provision of 12 new wells (2 wells per village) as an immediate response to potable water supply issues

Six wells were committed to be developed by 2020 and of these, five (5) have been developed; 3 (three) in Karangtengah, another 2 (two) in Sikunang, and 1 (one) well in Kepakisan village. One of the 3 (three) wells in Karangtengah village has not met the water volume criteria, thus has been abandoned. GDE has planned to drill 4 (four) more wells within this year of 2021 for Karangtengah (1 well), Dieng Kulon (2 wells), and Pranten village (1 well).

GDE has received confirmation from Geological Agency (*Pusat Air Tanah dan Geologi Tata Lingkungan*) corresponding to GDE's letter No. 347/PRO.00-GDE/XII/2020 dated 15 December 2020. A Study was held in March 2021 to have a better understanding about the water well's aquifer which will be targeted to be drilled. Based on the Resistivity Study Report (2021), it is preferable to optimize surface water and/or springs than to drill waterwells in this area, considering the (i) detention of waterwells drilling process in 2020 and (ii) the resistivity cross-section maps itself.

GDE has also been requested to develop/optimize water distribution system, referring to Sikunang Head of Village's letter No. 140/05/SPAM/II/2021 dated 1 February 2021 and Karangtengah Head of Village's letter No. 044/VI/2021 dated 17 June 2021. Furthermore, in 2-3 June 2021 GDE consulted with the village heads in order to develop a distribution system for the completed waterwells. In response, GDE has committed to conducting the feasibility study on improvement of the water supply system for 6 (six) affected villages.

- b. Provision of periodic free health screening and follow-up medical services .
- c. Consolidation of waste (garbage) recycling, training and marketing of products for an existing group in Sikunang Villages.

52. TORs for both activities have been developed and the Project is currently awaiting the contract to be awarded. Table 13 below shows its implementation schedule.

Table 13. Implementation Schedule for Community Development.

No	Program Name	Implementation Schedule
i	Free medical screening and follow-up	October 2021
ii	Consolidation of waste (garbage) recycling (training and marketing)	October 2021 – April 2022

53. **Other support provided as community development** from GDE during the reporting period includes starting geo-spatial planning, support for village enterprises, GDE has been introducing geo-social-spatial planning methods to local (village) government since April 2021 and targeted to end in August 2021. The scope of the works are as follows:

- a. Dissemination of Law No. 6/2014
- b. Geo-Social-Spatial training
- c. Participatory mapping
- d. Database (mapping) of village potential

54. GDE has started to improve/optimize Village-Owned Enterprises (*BUMDes*) since June 2021. The main activities are planned to be delivered in August-September 2021, and they are as follows:

- a. *BUMDes* assessment
- b. Modul development
- c. Training
- d. Comparative study to *BUMDes* which is already successful.

2. Patuha 2 Sub-Project

55. Based on consultations with local communities conducted in March and September 2019, GDE committed to expand and improve delivery of its Community Development program to the communities of Alamendah, Sugihmukti, and Panundaan Villages under the Patuha-2 sub-project, as part of its project benefits-sharing objective.

48. In the previous reporting period, there was 1 (one) program out of 8 (eight) community development programs that had been implemented. That was the identification of vendor opportunities for local entrepreneurs or via partnership agreements with Village Governments or Village *BUMDES*. As follow up to this, assistance in the development of *BUMDes* was provided in Sugihmukti Village in May-June 2020 periods.

49. During this monitoring period, GDE has coordinated with *Disnaker* (Labour Agency) of Bandung concerning the recruitment committee system for fulfilling human resource needs in Patuha-2 Sub-Project. GDE planned both to conduct dissemination of local hire recruitment information and to establish the Local Hire Recruitment Committee by July 2021. In supporting orphans and/or vulnerable community members, GDE conducted the *Safari Ramadhan* event delivering staples food packages to surrounding communities in April 2021.

50. Value Chain Analysis was carried out between April – June 2021, resulting in the following insights to support planning of local economic development support:

- a. In Sugihmukti – potential to provide assistance to *BUMDes*, to ensure the local products (from SMEs) development are aligned with the *BUMDes* development/strategy.
- b. In Panundaan - potential to provide assistance to strengthen *BUMDes* in order to increase rural economic growth.
- c. In Alamendah, potential to support village government willingness to determine parties to be involved in SME development, both related to SME and *BUMDes* actors.

51. GDE has also started to provide support improve/optimize Village-Owned Enterprises (*BUMDes*) since June 2021. The main activities are planned to be delivered in August-September 2021, as follows:

- a. *BUMDes* institutional capacity assessment
- b. Modul development
- c. Training
- d. Comparative study to succesful *BUMDes*.

52. Table 14 below summarized the type of Community Development activities and status consistent with the DDR (2019).

Table 14. Community Development Activities in Patuha-2 Sub-Project.

TYPE OF ACTIVITY	TARGET PERSON / GROUP	THE OBJECTIVE	IMPLEMENTATION STATUS AS OF JUNE 2021
1. Employment for unskilled labour at GDE Patuha (inc. project related work).	Community members	To increase local economic benefits by ensuring priority employment opportunity for local people in Project activities	Coordination with relevant stakeholder in preparation of hiring local workers procedure
2. Identification of vendor opportunities for local entrepreneurs or via partnership agreement with Village Governments or Village BUMDES.	Village BUMDES or local entrepreneurs	To increase local economic benefits by enabling maximized local supply opportunities,	Assistance in the development of <i>BUMDes</i> was provided in Sugihmukti Village in May-June 2020 periods
3. Scholarships and board and lodging allowance.	Students	To increase local welfare and socio-economic by supporting education for eligible local students	Under preparation
4. Support for orphans and vulnerable community members.	Orphans, women headed HH, poor HH	To increase local welfare and socio-economic level and create positive social relations	Providing staples food for community surrounding project during Ramadhan (April 2021)
5. Value chain analysis, development for home industries in food crop processing and marketing (including permits/certification).	Women group	To increase local economic benefits and socio-economic levels by supporting value adding and income diversification	Initial assessment to formulate support for three affected villages

TYPE OF ACTIVITY	TARGET PERSON / GROUP	THE OBJECTIVE	IMPLEMENTATION STATUS AS OF JUNE 2021
6. Training, mentoring and equipment for motor mechanics, welding or tour guides.	Youth	To increase local welfare and socio-economic by supporting vocational training for local people	Under preparation
7. Identification and development of local tourism services opportunities.	Youth groups, BUMDES	To increase socio-economic levels by supporting economic diversification	Under preparation
8. Support for traditional performing arts groups.	Neighbourhood cultural / performing arts groups.	To increase local welfare and social relations by supporting cultural identity and activities	Under preparation

53. Other community development programs are in the planning stage and/or procurement process, i.e. (i) to provide scholarship, (ii) local food development, (iii) training, (iv) local tourism development, and (v) traditional/local art support. Table 15 below shows the details planned in relation to this, and **Appendix J** provides an example of the TORs developed to procuring services to support this program.

Table 15. Implementation Schedule for Community Development.

No	Program Name	Implementation Schedule	Venue	Participants
i	Scholarship	August 2021 – July 2022	N/A	Total 30 (thirty) students from affected villages
ii	Local food producing, processing, and marketing	September 2021 – March 2022	N/A	3 (three) groups per affected village
iii	Training (welding)	September 2021 – October 2021	Proposed to be delivered by Polytechnic Bandung	Total 30 (thirty) participants from affected villages
iv	Local tourism development	October 2021 – November 2021	N/A	Under discussion
v	Traditional/local art support	October 2021 – November 2021	N/A	Under discussion

D. Grievance Redress Mechanism

1. Dieng 2 Sub-Project

54. GDE has established the Project's Standard Operation Procedure (SOP) for a Grievance Redress Mechanism since 10 September 2020, referring to GDE's Decree No. 034.SK/PST.00-GDE/IX/2020. This SOP includes step by step instructions and specific time and workflows to ensure stakeholder complaints are effectively handled. The scope is divided into: (i) Information, (ii) Consultation, and (iii) Mediation. A grievance log has been established, and the receipt and resolution of all grievances are reported here on a semi-annual basis, as well as in the Semi Annual Environmental Monitoring Report, when relevant.

55. For Dieng 2 Project (HALO DIENG 2), the communication media being used are:

- a. Hotline : +62 812 – 10000 – 630
- b. E-mail : halodieng2@geodipa.co.id
- c. Office : PT Geo Dipa Energi (Persero) Unit Dieng
Jl. Raya Dieng-Batur, Banjarnegara

56. GDE has intensified the Grievance Redress Mechanism disclosure/dissemination to stakeholders, as each local (village/sub-district) government offices now has had a banner/leaflet/etc related to GDE Grievance Redress Mechanism provided. **Appendix E** provides examples of evidence of these socialisation activities during January to June 2021.

57. GDE has also established a Grievance Redress Committee referring to GDE's Decree No. 015.SK/PST.00-GDE/IV/2021 dated 15 April 2021. The committee is shown in Table 16 below. GDE has planned to conduct first initial meeting of Grievance Redress Committee in July-August 2021.

Table 16. Grievance Redress Committee.

No	Role/Institution	Position within Team
COMMITTEE		
PT Geo Dipa Energi (Persero) – Project Head Office		
1	Project General Manager	Head of Committee
2	HSE & Safeguard Division / Manager	Member
	Government Relation & Social Safeguard Assistant Manager	
	Environment Safeguard Assistant Manager	
	Health & Safety Assistant Manager	
Representatives of sub-district level communication forum (<i>Forkompinca</i>)		
3	Head of Sub-District (<i>Kecamatan</i>)	Member
4	Head of Police Sector (<i>Polsek</i>)	Member
5	Head of Military Area Command (<i>Koramil</i>)	Member
TECHNICAL TEAM		
PT Geo Dipa Energi (Persero) – Project Site Office		
6	Project Manager (Dieng-2/Patuha-2)	Head of Technical Team
7	HSE & Safeguard Superintendent (Dieng-2/Patuha-2)	Member

No	Role/Institution	Position within Team
8	Social Safeguard & Public Relation Supervisor (Dieng-2/Patuha-2))	Member
9	Social Safeguard & Public Relation Staff (Dieng-2/Patuha-2))	Member
Representatives of village government and community		
10	Head of Villages	Member
11	Community Leaders	Member
12	Women Representatives	Member
Others		
13	Environmental and Social Safeguard Specialist (Project Management Consultant)	Member
14	Contractor Representatives	Member

58. It was reported in the previous monitoring report that the complaints received were about inventory of losses in land clearing process. Eleven AHs (tenant farmer) raised complaints to the head of village (as member of the Integrated Team), requesting correction to the losses data, since some of their crops had not been included/identified as their affected asset. The complaints were formally forwarded/submitted to the Head of Integrated Team through the GDE's letter No. 421.1/DNG.1.00-GDE/VII/2020 (dated 10 August 2021). Verification of data was held on 11-12 August 2020. As the result, the objections have been accommodated and approved.

59. There were two complaints recorded in this monitoring period, as shown in Table 17 and elaborated here. Some farmers in Karangtengah village, who have farm fields near the power plant location, complained that the building of the power plant construction fence blocked/limited their access. They asked GDE to provide alternative access. A representative from this farmer group submitted the complaint to GDE on 10 June 2021. GDE responded to this complaint by sending a letter to the farmers on 14 June 2021. The letter explained GDE built a temporary route near the construction entry gate. The farmers can use this route to their farm fields during the power plant construction process. This complaint was resolved by GRC Project Manager 1.

60. On the same day, 10 June 2021, by a similar representative, these farmers from Karangtengah village complained about air pollution, vibration, water pollution, labor relation, labor standard, and asset compensation. Responding to this complaint on 16 June 2021, GDE provided clarification and explained the follow-up plans. GDE also informed the farmers about the socialization that was conducted periodically regarding the company's activities. This complaint was resolved by GRC Project Manager 1.

2. Patuha 2 Sub-Project

61. GDE has established a Standard Operation Procedure for its Grievance Redress Mechanism since 10 September 2020 with GDE's Decree No. 034.SK/PST.00-GDE/IX/2020. This SOP includes step by step instructions and specific time and workflows to ensure stakeholder complaints are effectively handled. The scope is divided into: (i) Information, (ii) Consultation, and (iii) Mediation. A grievance log has been established, and the receipt and resolution of all grievances are reported here on a semi-annual basis, as well as in the Semi Annual Environmental Monitoring Report, when relevant. In the previous report, there were no complaints, to December 2020.

62. For Patuha-2 Sub-Project (HALO PATUHA 2), the communication media for grievances are as follows:

- a. Hotline : +62 812 – 30000 – 630
- b. E-mail : halopatuha2@geodipa.co.id
- c. Office : PT Geo Dipa Energi (Persero) Unit Patuha
Jl. Rancabolang Km. 14, Desa Sugihmukti,
Kec. Pasirjambu, Bandung

63. GDE has also established a Grievance Redress Committee referring to GDE's Decree No. 015.SK/PST.00-GDE/IV/2021 dated 15 April 2021. The committee is shown in Table 16 above. GDE has planned to conduct first initial meeting of Grievance Redress Committee in July-August 2021. Evidence of this process is provided in **Appendix K**.

64. GDE has intensified the Grievance Redress Mechanism disclosure/dissemination to stakeholders, as each local (village/sub-district) government offices now has had a banner/leaflet/etc related to GDE Grievance Redress Mechanism provided. **Appendix L** provides examples of evidence of these socialisation activities during January to June 2021. There were 4 (four) grievances/complaints recorded in the period to June 2021 as detailed below :

65. On 22 April 2021, a complaint was received via telephone from a BABINSA (security) officer about trucks owned by GDE partner company (PT. Kolorindo) that passed through Sugihmukti village at night without coordination with local Koramil. Instead, PT. Kolorindo had used the security services of a mass organization (PP). GDE coordinated with KORAMIL and responded to this complaint by agreeing that for every transportation/mobilisation plan by truck or car, the companies involved have to coordinate with KORAMIL. Also, the KORAMIL asked not to use the security services from mass organizations, because it can cause jealousy among them. This complaint was solved on the same day with consultation between GRC Project Manager 2 and KORAMIL.

66. As separate complaint was logged from PTPN VIII Rancabolang because the project trailer truck accident blocked the route. They requested a replacement for the rental of 1 bus for the transportation of their PTPN's workers who want to vaccinate and were not able to get to their offices. The complaint was resolved by transporter who paid the loss to PTPN VIII on the same day.

67. A third complaint was by PT. Perhutani via letter on 23 April 2021, asking for clarification regarding the start of activities Wellpad BB. PT. Perhutani also asked for information about casing mobilization that according to PT. Perhutani, will through the Perhutani KBKPH Ciwidey area. On 27 April 2021, GDE confirmed that there had been no activities at the BB location yet, and explained that the company would send an official notification letter if there are activities. As for the case mobilization, GDE confirmed the route.

68. By telephone on June 2, 2021, village officials Sugihmukti and Alamendah asked about job vacancies at the Geo Dipa Patuha Project. A day later, GDE apologized for the spread of the disinformation because it was inaccurate. On that occasion, GDE explained the recruitment for workers at PT. Geo Dipa and other partners for this project are not commencing yet.

69. The above records indicate that the mechanisms developed by GDE to facilitate stakeholder communication are effective, and that the company is reachable by diverse parties. The nature of the 'complaints' reported here indicates that there is a need to refine the grievance log, to classify and distinguish between enquiries and complaints, so that the records and responses can be more accurately analysed and reported.

Table 17. Summary of Grievances/Complaints Received and Resolution Status for Dieng-2 and Patuha Sub-Project as of June 2021.

Village	Complaint/ Grievance Topic(s)	Number of Complaint/ Grievance Received			Status of Grievance(s)		
		#of complaint from previous monitoring period	# of complaint received within this monitoring period	Total accumulated complaint received	# Resolved	# of On going	Remark
Dieng 2 Sub-Project							
Karangtengah	(i) Traffic Disruption, and (ii) GDE operational activities	11 AHs (tenant farmers)	2	13	13	0	The complaints were resolved in 4 and 6 days
Dieng Kulon	-	-	-	-	-	-	-
Kepakisan	-	-	-	-	-	-	-
Bakal	-	-	-	-	-	-	-
Sikunang	-	-	-	-	-	-	-
Pranten	-	-	-	-	-	-	-
Patuha 2 Sub-Project							
Alamendah	Traffic Disruption	-	1	1	1	-	GDE responded immediately to facilitate PTPN VIII and transporter
Panundaan	-	-	-	-	-	-	-
Sugihmukti	(i) Traffic Disruption (ii) Labour/ Recruitment Process, (iii) Clarification of Project Schedule	-	3	3	3	-	GDE responded complaints in average of within 2 days

V. Institutional Support to Social Safeguards

A. Staff Support to Ensure Compliance

70. A Project Management Consultant (PMC) with an international and a national Social Safeguards /Resettlement Specialist have been recruited. The consultants will support the Government Relation & Social Safeguards Assistant Manager, Social Safeguard Staff, GDE's Land Acquisition Team, and CSR/Community Development Division. They assist in the implementation of land acquisition and involuntary resettlement activities, delivery of Livelihood Restoration programs, Community Development Reorientation activities, and monitoring. However, as of June 2021, the mobilization of the PMC is delayed, implicating the preparation of this Social Safeguard Semi-Annual report. Although this has also delayed the preparation of the new RP, it is planned to be completed for approval and disclosure by December 2021 so does not impact Project schedule.

71. **Capacity building.** To fill the gap in delayed on-board of the PMC, a safeguards induction, namely "Safeguard Talks," was conducted by ADB on 12 November 2020. The objective was to improve the understanding of GDE (PMU, and BoD/BoC as well as other stakeholders) on ADB and project safeguards. In particular, to improve the understanding of specific safeguard requirements, as well as gender actions and targets in the Project Gender Action Plan or GAP.

72. The main output of the safeguard and gender induction was GDE personnel having a common understanding on safeguard requirements and GAP for the project. The event was conducted by virtual methods and involved 50 participants, of which 21 (twenty-one) were women. The agenda delivered was related to the social safeguards, as follows:

- i. IR and IP sub project screening and required social safeguards planning document.
- ii. Government of Indonesia (GoI) Laws and Regulations on Land Acquisition.
- iii. ADB SPS 2009 on Involuntary Resettlement (Provisions and Principle).
- iv. Gap Analysis of GoI Laws and Regulations and ADB SPS 2009 on Involuntary Resettlement and Project Resettlement Principle.
- v. Meaningful consultation and disclosure with special attention to gender and vulnerable groups.
- vi. Grievance Redress Mechanism.
- vii. Monitoring.
- viii. Livelihood Restoration Program.

73. Following these training activities, "Safeguard Talks #2" was conducted on 29 March 2021. The objective of the event was to improve the wider Project team's understanding on ADB's project safeguards, specifically for Grievance Redress Mechanism developed for Dieng-2 and Patuha-2 Project. The event was attended by 32 participants and 14 (fourteen) of them are women.

B. Funds Availability and Sourcing and Limitations to RP Implementation

74. Availability of budget for land acquisition and land clearing was not a limitation of RP implementation during the reporting period. Compensation for tenant farmers has been provided timely. The delay in the implementation of the LRP is not due to limited funds but because of the pandemic situation. Below is the status of the budget disbursement.

Table 18. Summary of Social Safeguards Budget Disbursement.

No	Subproject/Item	Estimation budget as per Planning Doc (USD)	Paid/Disbursed as of this period (USD)	Total accumulated Disbursement/ Payment (USD)	Remarks
Dieng 2 Sub-Project					
1	Land acquisition and land clearing	190,845	103,721	103,721	
2	Livelihood restoration programs	1,118,309	14,235	182.800	
3	External Monitoring Agency	35,211	0	0	
Patuha 2 Sub-Project					
1	IPPKH Permit	704,225	0	0	
2	Lease cost from PT XIII Rancabolang	600,141	0	0	

Note : exchange rate refer to the LARP Dieng 2 2019

VI. Other Concern, Notations and Corrective Actions

A. Loan Covenants Compliance Analysis

75. Table 19 below shows the assessment of compliance with loan covenants related to social safeguards aspects.

Table 19. Loan Covenants Compliance Analysis (as of June 2021).

Para No.	Description	Compliance Result/Issues
Schedule/Article 4		
Para 15	<p>The Borrower shall ensure that all land and all rights-of-way required for the Project are made available to the Works Contractor in accordance with the schedule agreed under the related Works Contract and all land acquisition and resettlement activities are implemented in compliance with:</p> <p>(a) all applicable laws and regulations of Indonesia relating to land acquisition and involuntary resettlement;</p> <p>(b) the Involuntary Resettlement Safeguards; and</p> <p>(c) all measures and requirements set forth in the RPs and the DDR, and any corrective or preventative actions set forth in the Safeguards Monitoring Report.</p>	<p>Being complied both for Dieng 2 and Patuha 2</p> <p>Land clearing compensation has been delivered in October 2020, following Resettlement Plan and in accordance with the Presidential Regulation no. 62/2018. Land acquisition has been postponed and its process was consulted with AHs.</p> <p>IPPKH for Patuha 2 subproject has been issued in January 2021.</p>
Para 16	<p>Without limiting the application of the Involuntary Resettlement Safeguards, the RPs, or the DDR, the Borrower shall ensure that no physical or economic displacement takes place in connection with the Project until:</p> <p>(a) compensation and other entitlements have been provided to affected people in accordance with the RPs and the DDR; and</p> <p>(b) a comprehensive income and livelihood restoration program has been established in accordance with the RPs and the DDR.</p>	<p>Being complied with for Dieng 2 subproject</p> <p>Compliant for Patuha 2 subproject</p> <p>Land clearing execution and area fence construction for proposed power plant site were carried out after (i) compensation delivery to tenant farmers and (ii) 4 (four) former coordinators hired as GDE's worker. There is no commencement of civil works, yet.</p>
Safeguards - Indigenous Peoples		
Para 17	<p>The Borrower shall ensure that the Project does not have any indigenous people's impacts within the meaning of the SPS. If due to unforeseen circumstances, the Project has indigenous people's impacts, the Borrower shall take all necessary or desirable steps to ensure that the Project complies with all applicable laws and regulations of Indonesia and with the SPS.</p>	<p>N/A</p> <p>Based on ADB Safeguard Assessment the INO GPGP has been declared as category C for indigenous people, there is no indigenous people residing in the project location. GDE has committed to follow the ADB SPS.</p>
Human and Financial Resources to Implement Safeguards Requirements		
Para 18	<p>The Borrower shall make available necessary budgetary and human resources to fully implement the EMPs, the RPs and the DDR.</p>	<p>Being complied for both Dieng 2 and Patuha 2 subproject</p> <p>Payment of compensation for tenant</p>

Para No.	Description	Compliance Result/Issues
		<p>farmers have delivered timely. Budget for additional land acquisition has allocated in 2021 FY, ready to disbursed awaiting completion of Update RP.</p> <p>Social Safeguards Staff/Officer have been appointed in PMU, consisted of 5 personels in PMU HO. The social safeguards consultants under PMC await for their mobilization.</p>
Grievance Redress Mechanism		
Para 19	<p>The Borrower shall ensure that a safeguards grievance redress mechanism acceptable to ADB has been established and is maintained in accordance with the provisions of the IEEs, the EMP, the RPs, the DDR and the PAM, to consider safeguards complaints.</p>	<p>Being complied with both for Dieng 2 and Patuha 2 subproject</p> <p>GDE has developed SOP concerning GRM on September 10th 2020 referring GDE's Decree No. 034.SK/PST.00-GDE/IX/2020, then the GRC is to be established on July 2021. Need for improvements in grievance reporting have been identified.</p>
Safeguards - Related Provisions in Bidding Documents and Works Contracts		
Para 20	<p>The Borrower shall ensure that all bidding documents and Contracts for Works contain provisions that require Contractors to:</p> <p>(a) comply with the measures relevant to the Contractor set forth in the applicable IEE, the EMP, the RP, and the DDR (to the extent they are concern with impacts on affected people during construction), and any corrective or preventative actions set forth in a Safeguards Monitoring Report;</p> <p>(b) make sure budget for all such environmental and social measures available;</p> <p>(c) provide the Borrower with a written notice of any unanticipated environmental, resettlement or indigenous peoples risks or impacts that arise during construction, implementation or operation of the Project that were not considered in the applicable IEE, the EMP, the RP, and the DDR;</p> <p>(d) adequately record the condition of roads, bridges, agricultural land, houses and other infrastructure prior to starting to transport materials and construction; and</p> <p>(e) reinstate pathways, roads, bridges, other local infrastructure, and agricultural land to at least their pre-project condition upon the completion of construction.</p>	<p>Compliant both Dieng 2 and Patuha 2 subproject</p> <p>All ADB financed contracts procurement is following the ADB Procurement Policy and Regulations. The process and implementation of the procurement process is closely supported by ADB procurement consultant and under the guidance of ADB Procurement & Safeguard Specialist and Technical Assistance. A specific clause related to the contractual obligation on to the social safeguards was provided in the bidding documents, and it's following the RP and or DDR.</p>
Safeguards Monitoring and Reporting		
Para 21	<p>The Borrower do the following:</p>	<p>Partially Compliant</p>

Para No.	Description	Compliance Result/Issues
	<p>(a) submit semi-annual Safeguards Monitoring Reports to ADB and disclose relevant information from such reports to affected persons promptly upon submission;</p> <p>(b) if any unanticipated environmental and/or social risks and impacts arise during construction, implementation or operation of the Project that were not considered in the IEEs, the EMPs, the RPs, and the DDR promptly inform ADB of the occurrence of such risks or impacts, with detailed description of the event and proposed corrective action plan; and</p> <p>(c) report any actual or potential breach of compliance with the measures and requirements set forth in the EMPs, the RPs, and the DDR promptly after becoming aware of the breach.</p>	<p>The Environmental Safeguard Semi-Annual Report and Social Safeguard Semi-Annual Report have cleared and posted in ADB website.</p> <p>Disclosure on GDE website has been initiated but is not yet active per June 2021.</p>

B. Compliance to Social Safeguards Policy Principles

76. Compliance assessment in accordance to the project resettlement principles set forth in EARR's Resettlement Customary Community Development Frameworks (RCCDF) are shown in Table 20.

Table 20. Social Safeguards Project Principles Compliance Analysis (as of June 2021).

No	Social Safeguards Project Principle- refer to RP Dieng and DDR Patuha	Compliance Assessment
1	Avoid involuntary resettlement as much as possible. If this is not possible, impacts shall be minimized by exploring project and design alternatives. Efforts to minimize resettlement impacts have been taken by GDE through; (a) using GDE's lands for Dieng – 2; only 3,010 m ² additional land will be acquired for the sub-project through negotiated land acquisition; and (b) applying use of underground transmission cable for the construction of the transmission line along approximately 6 Km from the proposed Dieng Unit 2 Power Plant to the existing sub-station. Efforts to minimize resettlement impact will continue during implementation.	<p>Compliant</p> <p>Designs are optimized to minimize IR impacts. Most of the expansion of wellpads for Dieng2 and Patuha 2 are on the GDE's lands.</p> <p>The substations for Dieng 2 substation for Dieng 1. A RP for Dieng 2 and the DDR for Patuha 2 has been developed based on a social impact assessment of all APs and a mitigation plan is included.</p>
2	Screen sub-project components during feasibility study or before preparation of resettlement plan to identify involuntary resettlement impacts and risks and the likelihood of impacts per subproject activity.	<p>Compliant</p> <p>Social Impact Assessment (SIAs) have been carried out during subproject preparation with attention paid to the participation of women and other vulnerable groups. Subproject screening was conducted in the early stage of SIAs.</p>
3	Carry out culturally appropriate and gender-sensitive social impact assessments (SIA) to assess potential impacts on APs particularly with affected vulnerable groups.	
4	Conduct meaningful consultations with affected APs, stakeholders, concerned NGOs, and	<p>Compliant</p> <p>Consultations have been carried out during</p>

No	Social Safeguards Project Principle- refer to RP Dieng and DDR Patuha	Compliance Assessment
	community groups to solicit their participation across land acquisition and involuntary resettlement process and monitoring. Inform APs on the land acquisition and involuntary resettlement process, their entitlements, and compensation and assistance options. Pay attention to the need of vulnerable groups, especially those below the poverty line, the landless, the elderly, women and children, and those without legal title to land and ensure their participation in consultations.	preparation of social safeguards planning documents involving APs, community surrounding, CSOs, NGO and relevant institutions within local government. Consultations will be continued prior and during construction.
5	Establish a grievance redress mechanism to receive and facilitate the affected persons's concerns .	Compliant A specific GRM has been outlined in the RP. GDE has developed SOP concerning GRM on September 10 th 2020 referring GDE's Decree No. 034.SK/PST.00-GDE/IX/2020, then the GRC is to be established on July 2021.
6	Improve or at least restore the livelihood of the APs through (a) land-based income and livelihood program; (b) replacement of assets with equal or higher value; (c) compensation at full replacement cost for lost assets; and (d) additional assistance through benefit sharing where possible.	Partially Compliant A livelihood restoration program (LRP) has been outlined in the RP for the Dieng 2 and Community Development for Dieng 2 subproject; however its implementation only started in partas of June 2021
	Assist and compensate APs without title or any recognizable legal rights to land for non-land assets at replacement cost.	Compliant GDE has provided compensation to the tenant farmers utilized GDE's at replacement cost. Amount of compensation was calculated/recommended by independent appraiser.
	Pay compensation for lost land and non-land assets prior to physical or economic displacement. Civil works will not commence until APs are fully compensated, and other entitlements take place.	Compliant No commencement of civil construction yet. Payment of compensation to the tenant farmers has been provided.
	Disclose the RP document and its updates, if required to the APs and other stakeholders in an accessible place and a form and understandable language. The RP will be disclosed on project and ADB's website.	Partially Compliant The RP 2019 for Dieng 2 and the DDR for Patuha 2 has been disclosed in the ADB website, but not in the GDEs website yet. The summary of RP and DDR in form of project information booklet (PIB) has also been disseminated to AHs and other relevant stakeholders.
	Negotiated land acquisition will follow procedure in a transparent, consistent, and equitable principles and be confirmed through a written record and verified by an independent third party.	N/A Land acquisition mechanism will apply IR principle.

No	Social Safeguards Project Principle- refer to RP Dieng and DDR Patuha	Compliance Assessment
	Monitor implementation of the resettlement planning, resettlement outcomes and impacts on the APs standards of living. Disclose monitoring reports on the project's website and make it available on the project office.	Partially Compliant Social Safeguards Semi-Annual report has been prepared and submitted in June 2021. Monitoring report is available at the Project office in Soreang and is in the process of being disclosed on GDE website, although not actively viewable as of June 2021.
	The Sub-project will not issue the notice to proceed (NTP) for any construction works until full payment has been fully disbursed to all APs and compensated APs have cleared the acquired land and harvested their crops in a timely manner.	Compliant Land clearing execution and area fence construction for proposed power plant site were carried out after (i) compensation delivery to tenant farmers and (ii) 4 (four) former coordinators hired as GDE's worker.

C. Compliance with the Entitlement Matrix

77. Compliance assessments in accordance with the entitlement matrix set forth in the approved Resettlement Plan or Dieng 2 subproject are shown in Table 21 below.

D. Outstanding Issues on Resettlement, Corresponding Plan of Action and Status

78. Outstanding issues and concerns updates from the previous report are shown in Table 22 below.

Table 21. Compliance Assessment to The Entitlement Matrix as of June 2021.

NO.	TYPE OF LOSS	ENTITLED PARTY / PERSON	ENTITLEMENT	COMPLIANCE ASSESSMENT
Loss of Land				
1.	Loss of land, including agricultural and residential land <u>Applies to land acquisition</u>	Those who have formal legal rights or those whose claims over the land is recognised as a full title, including people occupying State land in good faith.	<ul style="list-style-type: none"> ▪ Cash compensation at replacement cost and reflective of fair market value at the time of payment of compensation; or land replacement with at least similar attributes to the acquired land in term of value, productivity, location, and titling. ▪ Any taxes and transactional cost borne by the project. ▪ Financial assistance for the renewal of the land ownership documents (certificate and land documents recognized as full title) for the residual area of the entitled persons' land. ▪ If the remaining affected land can no longer function for the specific use and utilization, the entitled party can ask for compensation for their entire land at replacement cost (Law No. 2 / 2012 article 35). 	Not yet implemented

NO.	TYPE OF LOSS	ENTITLED PARTY / PERSON	ENTITLEMENT	COMPLIANCE ASSESSMENT
Loss of Crops				
2.	Loss of crops <i><u>Applies for land acquisition and land clearing</u></i>	Owners regardless of land tenure status (with certificate of recognizable rights, informal dwellers, occupants)	<ul style="list-style-type: none"> ▪ Annual crops: compensation will be paid based on prevailing market rates. ▪ Perennial crops: compensation at replacement cost by considering crops' productivity and age. ▪ No deduction of depreciation for the valuation of crops. 	Compliant Compensation to the loss of crops provided to the tenant farmers based on the valuation of independent appraisal
Economic Losses				
3.	Loss of arable land for farming <i><u>Applies to land clearing</u></i>	People who have leased / occupied GDE land for farming.	<ul style="list-style-type: none"> ▪ Cash compensation for loss of crops income equivalent to a minimum of one year of net product market value 	Compliant <ul style="list-style-type: none"> ▪ Cash compensation for loss of income equivalent to 2 years of net product market value ▪ APs are allowed to harvest prior to land clearing
Temporary or Permanent Impacts on Non-land Assets during Construction				
4.	Temporary or permanent impacts due to construction.	For those who have formal legal rights or whose claim on land is recognized as a full right.	<ul style="list-style-type: none"> ▪ For lease payments of the affected land by the contractor based on applicable rental fees and agreement with land owners. ▪ For productive land, rental fee will not be less than net income that would have been generated from the affected productive land. ▪ Compensation for non-land assets acquired (trees, plants, structures) permanently affected will be 	<ul style="list-style-type: none"> ▪ Not yet implemented however impacts from pre-construction activities are being monitored already (for example, perceptions of employment opportunities, communication and concerns about equipment mobilisation and land clearing). Construction activities have not begun.

NO.	TYPE OF LOSS	ENTITLED PARTY / PERSON	ENTITLEMENT	COMPLIANCE ASSESSMENT
			<ul style="list-style-type: none"> compensated at replacement cost. Land will be restored to pre-project conditions or better after construction has been completed. 	
5.		Those who have no formal legal rights (certificate) or recognizable title (informal dwellers, croppers)	<ul style="list-style-type: none"> Compensation for non-land assets (trees, crops, structures) at full replacement cost. No rental fee for the period of the impact. Land will be restored to pre-project conditions or better after construction has been completed. 	
6.		Government or State enterprises/communal property and assets (e.g. schools, mosques, village office power poles, village road etc.)	<ul style="list-style-type: none"> Rebuilding the facility or provide cash compensation based on the agreement with affected party(ies). 	
Other Appraisable Losses				
7.	Transaction cost <i>Applies to land acquisition and land clearing</i>	Those who has lost land and non-land assets regardless formal legal rights to land.	<ul style="list-style-type: none"> Allowance to cover administration cost, renewal of land ownership for residual land, land clearing. 	Compliant Compensation received by tenant farmers free from any administration cost, all administration cost paid by Geodipa
8.	Compensation for waiting period (interest) <i>Applies to land acquisition and land clearing</i>		<ul style="list-style-type: none"> Cash compensation based on risk-free interest, Government bank interest. 	N/A GDE paid compensation timely/soon after the AHs agreed with the amount of compensation.
9.	Loss of resource base (high risk of impoverishment) <i>Applies to land acquisition and land clearing</i>		<ul style="list-style-type: none"> One household member per AH given the opportunity for employment in project related job during construction. 	Partially Compliant <ul style="list-style-type: none"> Part of the LRP programs has been implemented (such as : the development of

NO.	TYPE OF LOSS	ENTITLED PARTY / PERSON	ENTITLEMENT	COMPLIANCE ASSESSMENT
			<ul style="list-style-type: none"> ▪ Participation in livelihood restoration program (LRP). 	<p>ground well and health services). The economic empowerment training will start to be carried out in 2021.</p> <ul style="list-style-type: none"> ▪ The leasing coordinator is hired as project workers.
10.	Unanticipated impacts or losses		<ul style="list-style-type: none"> ▪ Compensation for any damages to the properties, based on prevailing replacement cost. ▪ Provisions of mitigating measures shall be mitigated and documented based on project principles set forth in this RP. 	<p>Compliant</p> <ul style="list-style-type: none"> ▪ The New RP will be prepared for the additional land required for pad 7,9 and 30 which has not been covered in the approved RP 2019. ▪ Social Safeguards provision included in the bidding documents, including contractor responsibility to provide compensation for any damages to the public/private asset due to construction activities.

Table 22. Outstanding Issues and Concerns.

SUBPROJECT	OUTSTANDING ISSUES AND CONCERNS		FOLLOW ACTION/S		
	New/ Current	Pending From Previous Monitoring Reports	Action	Responsible Institution	Deadline
Dieng-2	Disclosure of the RP in the GDE's website	<ul style="list-style-type: none"> Upload the RP in the project or GDE websites Upload semi annual social safeguards report Jan-Dec 2020 in the GDE website 	Uploaded RP and semi annual report in the GDE website	Corporate Secretary	July 2021
	Implementation of land acquisition for six land owners	<ul style="list-style-type: none"> Will start to be negotiated in 2022, or to be determined by Drilling/Project schedule 		GDE LAT, HSE & Safeguard	Q4 2022
	Additional land acquisition for expansion of wellpad 7, 9, and 30	<ul style="list-style-type: none"> no pending actions however activities for preparation of RP have been initiated 		GDE LAT, HSE & Safeguard, ADB Consultant, Independent Appraisal	December 2021
	Operationalize GRM	<ul style="list-style-type: none"> Grievance Redress Committee (GRC) establishment 	<ul style="list-style-type: none"> GRC Dissemination and Kick-Off Meeting GRM monitoring 	HSE & Safeguard, GRC	July 2021-onward
	Livelihood Restoration Program	<ul style="list-style-type: none"> Implementation of training program as set forth in the RP Hired NGO to develop SSID 		HSE & Safeguard	Q2 2021-onward
			Develop TOR and recruit NGO to assist with LRP / CD implementation	HSE & Safeguard	Q3 2021
			Develop TOR and recruit independent	HSE & Safeguard	Q3 2021
Patuha-2	Disclosure of DDR in the GDE's website	<ul style="list-style-type: none"> Upload DDR in the GDE or Project website 		Corporate Secretary	July 2021
	Land acquisition for replacement of forest land	<ul style="list-style-type: none"> Preparation of RP for replacement of forest land, once confirmed if it will refer to the new or previous regulation Submission of RP to 	RP specialist mobilised Survey planned and document to be prepared in line with	IPPKH team, HSE Safeguard	Q3 2021

SUBPROJECT	OUTSTANDING ISSUES AND CONCERNS		FOLLOW ACTION/S		
	New/ Current	Pending From Previous Monitoring Reports	Action	Responsible Institution	Deadline
		Governor for location determination <ul style="list-style-type: none"> • Issuance of location determination • Implementation of land acquisition, including the payment of compensation • Conduct Social Impact Assessment, including the detailed measurement survey and SES for the replacement land 	drilling schedule, expected for Mid 2022		

Appendix A Household Data of Land Acquisition and Land Clearing in Dieng-2

Appendix B Compensation Received by the APs and 4 (four) Coordinators in Dieng-2

Appendix C Letter No. 016/PRO.08-GDE/II/2021 on Additional Land Acquisition Scheme for Dieng-2

Appendix D TOR for the Procurement Example of Livelihood Restoration Plan and Enhancement in Dieng-2

Appendix E Grievance Redress Mechanism Socialization in Dieng-2

Appendix F Information Disclosure Evidence in Patuha-2

Appendix G IPPKH Document in Patuha-2

**Appendix H Borrow to Use of Forest Area Permits (IPPKH) No. SK.32/1/KLHK/2021 from BKPM
in Patuha-2**

Appendix I Tree Inventory Report and Compensation Fee in Patuha-2

Appendix J Example TOR for Community Development Programs in Patuha-2

Appendix K GDE Grievance Redress Committee

Appendix L Grievance Redress Mechanism Socialization in Patuha-2